

ULTIMATE GREEN TERMITE PROTECTION

UP TO 8 GREEN POINTS



BORA-CARE®: 4 pts.

Bora-Care is a “green” borate-based EPA-registered termiticide approved as a primary termite barrier treatment in new construction. It is applied by pest control companies directly to wood and concrete and around foundation penetrations. This creates a continuous barrier that termites cannot cross and eliminates wood as a food source. Bora-Care delivers long-term residual protection for treated wood against termites, decay fungi and wood destroying organisms.

Earn green building points with Bora-Care:

- EarthCraft® (2-6 points)
- NAHB Model Green Home (4-6 points)
- LEED® for Homes (1 point)

TERMISTOP®: 4 pts.

Termistop Flanges and Blockouts are part of the Termimesh System of Termite Barrier Control. Termistop devices are designed to deliver non-chemical, long-lasting termite protection at the service penetrations through the slab. Once installed, Termistop eliminates these hidden termite entry points because the mesh is too small for termites to squeeze through and too hard for them to chew through.

Earn green building points with Termistop:

- EarthCraft® (2 points)
- NAHB Model Green Home (4 points)
- LEED® for Homes (.5 point)

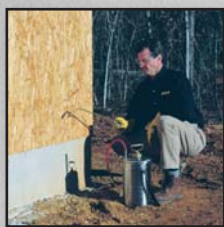


Green Pest Control Solutions

**Nisus Corporation • 100 Nisus Drive • Rockford, TN 37853 USA
(800) 264-0870 • www.bora-care.com • www.termistopusa.com**

**Contact Lee Barrett
865.206.4279 • leeb@nisuscorp.com**

A Bora-Care new construction termite treatment creates a perimeter barrier that termites cannot cross and eliminates wood as a food source.



Treat the exterior sheathing.



Treat the foundation walls in a crawl space or basement.



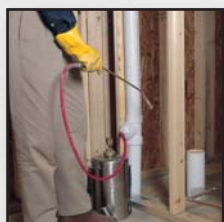
Treat the concrete and plumbing penetrations on slab structures.



Use optional marker dyes for quality control and to ensure proper application.



Treat the sill, band joists, subfloor and floor joists in a crawl space or basement structure.



Treat interior walls on slab structures.



Treat the inside of an exterior wall and sheathing.

Termistops are physical barriers to termites manufactured from high quality stainless steel mesh that termites cannot penetrate.

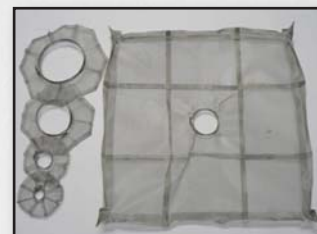


The apertures of the mesh are too small for termites to squeeze through and the mesh is too hard for termites to chew through.



Before the cement foundation is poured, Termistops are installed on all foundation penetrations and secured to eliminate termites from using the pipes as an entry into the home.

The Termistop units come in a number of sizes to cover plumbing penetrations and bath traps.



When the site is finished, you're ready for the cement to be poured.



Green Pest Control Solutions

Nisus Corporation • 100 Nisus Drive • Rockford, TN 37853 USA
(800) 264-0870 • www.bora-care.com • www.termistopusa.com

Contact Lee Barrett
865.206.4279 • leeb@nisuscorp.com